



*Team Official Guide  
to Hockey  
Rules and Regulations*

***2007-2008***

[www.gloucesterhockey.ottawa.on.ca](http://www.gloucesterhockey.ottawa.on.ca)

NOTE

1. *The GHA Team Official Guide to Hockey Rules and Regulations consists of extracts from the GHA By-law and the Rules and Regulations pertaining to the administration, organization, rules, regulations, and matters of discipline involving the players, parents and team officials (coach, assistant coach, manager and trainer).*
2. *The Guide, plus any amendments and/or additions issued during the season, is authorized for use by the team officials and players. In the event of any discrepancies, the original By-law and the Rules and Regulations shall take precedence.*
3. *In addition to this Guide, you should be familiar with the CHA Playing Rules and the ODMHA Code of Discipline, which are applicable to all players and team officials, plus any additional rules and regulations as published by your area association.*
4. *Where applicable, the reference to the GHA, CHA or ODMHA Articles, By-laws and Rules and Regulations is indicated in brackets at the end of the paragraph.*

***IF YOU SHOULD NOTICE ANY ERRORS OR OMISSIONS IN THE GUIDE, PLEASE INFORM THE GHA OFFICE OR ANY MEMBER OF THE EXECUTIVE.***

***WE WOULD ALSO APPRECIATE RECEIVING ANY COMMENTS AND/OR SUGGESTIONS YOU MAY HAVE.***

***THANK YOU FOR YOUR CO-OPERATION.***

**NOTE:**

This Guide contains all amendments to the GHA By-law and the Rules and Regulations as of May 17, 2006. You will be notified of any changes

## GLOSSARY OF TERMS

ARTICLE.....	- Paragraphs set forth as articles in the By-law
BOARD OF DIRECTORS .....	- The elected Executive and the appointed Directors
CHA.....	- Canadian Hockey Association
CARDED PLAYERS.....	- The registration of players with the CHA playing Competitive/representative hockey
CATEGORY/LEVEL .....	- The various levels of hockey within each division, e.g. “A”, “B” and “C”
COMPETITIVE/REPRESENTATIVE .....	- The “AA”, “A” and “B” Representative teams
CORPORATION .....	- The GHA
DIRECTORS.....	- The members of the GHA Board appointed by the Executive to assist in the operation of the association
DISTRICT 9 .....	- The District and the member associations as designated by the ODMHA
DIVISIONS .....	- The classes of hockey, e.g. Novice, Atom, Pee wee, Bantam, Midget and Juvenile
EXECUTIVE.....	- The duly elected members of the GHA
FISCAL YEAR.....	- The year-end for the association -April 30
GHA.....	- Gloucester Hockey Association
GRMH .....	- Gloucester Rangers Minor Hockey
MINOR OFFICIALS.....	- The timekeeper, scorekeeper and penalty box Attendant
ODHA.....	- Ottawa District Hockey Association
ODMHA .....	- Ottawa District Minor Hockey Association
ODMHL.....	- Ottawa District Minor Hockey League
OFFICIATING OFFICIALS .....	- The on-ice officials designated as the referee and linesmen
PLAYER.....	- The players are the members of the team participating in a game. It should be interpreted in a generic manner as pertaining to both sexes
REFEREE-IN-CHIEF .....	- Responsible for all officiating activities
R&R.....	- The Rules and Regulations of the GHA
TEAM OFFICIALS .....	- Applies to all persons involved in the management of a team, the coach, assistant coach, manager and trainer

**TABLE OF CONTENTS**

**CALL-UP PROCEDURES FOR ALL COMPETITIVE PLAYERS AND HOUSE LEAGUE ..... 4**

.....

***If you're not sure,  
don't guess... ASK!***

Karen Watts, Vice President House League  
Joe Rubino, Vice President Competitive

# **GHA TEAM OFFICIAL GUIDE TO HOCKEY RULES AND REGULATIONS**

The following extracts from the GHA By-law and the Rules and Regulations are the rules and regulations that pertain to the player, the team official and the member association.

Where applicable, the reference to the GHA, CHA or ODMHA Article, By-law, Rule and Regulation is indicated in brackets at the end of the paragraph.

## **1. CONVENORS**

- a. Each Division Convenor shall, on behalf of the Board of Directors to whom he is at all times accountable, superintend the operation of his division. Each member association shall be responsible for providing the Division Convenors who shall be assigned level/s by the GHA VP House League.

Typically, the convenors from the various levels, as described above, will become the Corporation's Head Convenor for the level. All recommendations by Division Convenors require the approval of the Vice President House League before enactment. **(GHA R&R 17.1)**

- b. It shall be the duty of the Division Convenor, member association Convenor or a duly appointed representative to attend games in the division and to ensure that the aims of the Corporation are being met to the greatest extent possible. **(GHA R&R 17.2)**
- c. In all matters pertinent to his division, the Division Convenor has the mandate of the Board of Directors to make necessary emergency decisions on behalf of the Board of Directors. Such decisions must subsequently be ratified by the Board of Directors, but on the spot, he is the Board of Directors. In the absence of a Convenor, a member of the Board of Directors may act as the Convenor. **(GHA R&R 17.3)**
- d. Convenors shall be responsible for ensuring that the Rules and Regulations are followed by players and team officials in their divisions. Their authority shall complement, but in no way supersede the authorities of referees. **(GHA R&R 17.4)**
- e. Convenors will discuss principles and policies with team officials when they feel it necessary, and must at all times be accorded this right by team officials. **(GHA R&R 17.5)**
- f. As a general rule, a player may NOT be moved down to a less competitive classification until his team has played three (3) league games unless the GHA Vice President is satisfied his talents are more suited to the lower league, initiation or development program. The best interests of the child and not coaches shall be paramount. Before exercising this authority, the Division Convenor shall consult with member association Convenors and parents to determine their views. Any player may (subsection to R&R16.8.b.) be subsequently moved back to the higher team.

Keeping Safety in mind, the following evaluation of over aged players will be undertaken

- skating ability
- ability to keep up with the play
- hockey sense

- stick handling skills
- shyness from the play
- evaluated at lowest level of the lower age category potential for injury

Exception: A player registered, for the first time, and identified by association evaluators as having talents more suited to a lower level, development or initiation program shall be identified and evaluated by GHA assigned evaluators prior to commencement of season play. Notification shall be provided to the GHA Vice President House League by September 20th. **(GHA R&R 17.6)**

- g. The Vice President House League shall record all moves either up or down and shall have full authority to prohibit indiscriminate shifting of players. **(GHA R&R 17.7)**
- h. Any Convenor shall make note of outstanding players and shall recommend to the Division Convenor and member associations that such players be placed in a higher category/level of competition. **(GHA R&R 17.8)**
- i. A competitive player may not play on a House League team. For example, a “B” Representative player must play on a competitive “B” or higher level team. **(GHA R&R 17.9)**
- j.
  - i) It shall be the Convenor's duty to ensure that in all games every player shall play regular shifts on his team as per R&R 26.3 and 26.4.
  - ii) The Convenor will take note of violations of the above principle and will discuss the same with the member association officials. If warranted, he shall make appropriate recommendations to the Division Convenor in unresolved instances who, in turn, may inform the Board of Directors. **(GHA R&R 17.10)**
- k. The Division Convenor shall receive all complaints, protests and appeals within his division.
- l. The Division Convenor shall recommend to the Discipline Committee disciplinary action against players or team officials when warranted. **(GHA R&R 17.12)**
- m. In cases of flagrant misconduct, intoxication, public displays of anger or other actions deemed to be sufficiently severe, the Convenors shall take such action as they deem necessary. Such action shall be immediately reported through the Division Convenor to the President who shall convene a meeting of the Discipline Committee at the earliest possible time to pursue the matter. **(GHA R&R 17.13)**
- o. He shall advise the Referee-in-Chief of any misconduct on the part of the referees or linesmen.
- p. The Convenor or duly appointed representative shall ensure that each coach or manager provides a representative to serve as a minor official at each game. (In other words, the Convenor's job is not to run the time clock or open the penalty box door.) **(GHA R&R 17. 15)**

## **2. REGISTRATION**

- a. All players, coaches, managers and trainers of teams shall be duly registered prior to the initial game of the regular schedule. **(GHA R&R 9. 10)**
- b. Players registered with the Corporation division teams shall not register or play with any other

hockey organization, club, etc. except that duly registered players may play on organized school, church or girls teams. **(GHA R&R 9.4)**

- c. The Registrar shall ensure that each player and team official is registered as required for his division and/or category/level of hockey. The maximum number of team officials for registration shall be six (6): a coach, a manager, a trainer and three (3) assistants. **(GHA R&R 9.5)**
- d. Players shall not be added to a team's list by the Registrar subsequent to noon of December 31 of the playing season. Players may be added to a team's list by the Registrar up to noon of February 10 of the playing season only where the player concerned has moved into the Corporation's area of responsibility from an outside location subsequent to December 31 of the playing season and a member association has submitted a duly completed certificate covering the player's registration together with proof of release if the player was registered with a team outside District 9. **(GHA R&R 9.6)**

### **3. AFFILIATION RULES**

Only the District Registrar will maintain and distribute all Affiliation lists. The directive for adding players to affiliation lists will be confirmed by the player's official team and the player's area president through the area President.

- a. Appearance of a registered player's name on the official game report of a game shall be considered participation in the game except in the case of an alternate goalkeeper, in which case actual participation only shall be considered as taking part in the game, and such participation shall specifically be noted on the official game report. **(GHA R&R 16.6)**
- b. Affiliated players used by a higher division or category team in a game shall be designated on the official game report by the use of the symbol "A/P" after their name on the team line-up or roster. House teams will complete affiliation lists by October 27th. Players must be on the DISTRICT REGISTRAR'S affiliation lists before playing in a game for the affiliation team. **(GHA R&R 16.7)**
- c. The purpose of the Corporation affiliation is to ensure that teams of a higher division or category have the opportunity to dress the number of players officially registered with the team. For this reason, affiliated players (i.e., players from teams within the same association) may only be used to replace absences from the original roster (cannot increase the roster). Any exceptions to the above must have prior approval. **(GHA R&R 16.8d)**

NOTE: "Division means the class of hockey being operated within the Corporation. These are as follows: Juvenile, Midget, Bantam, Pee wee, Atom and Novice.

Where the Branch operates on an age system whereby the name of the first year of the "Division" is prefaced by the word "Minor" this sub-division shall be considered a "Division".

"Category" for the purposes of these Rules and Regulations shall be House League "A", House League "B" and House League "C".

- d. Regular goalkeepers from a lower calibre team may dress and play as a spare goalkeeper only for a higher calibre team and shall be permitted to return to his lower calibre team until such

time as he is declared the regular goalkeeper of the higher calibre team. **(GHA R&R 16.3)**

Where there are A, B and/or C levels of House League Hockey, at no time shall a goalkeeper play for another team in their own category. This shall also apply when Appendix D - Goaltender Exemption of the ODMHA is used in emergency situations.

NOTE: Spare goalkeepers on competitive teams may play as regular goalkeepers in the Corporation provided they are bona fide “spares” on the competitive team. Goalkeepers playing on a regular or rotation basis on competitive teams shall not take part in league play.

- e. For play-offs only, teams may not use affiliated players unless the team is below 10 players (excluding a goalie). **(GHA R&R 16.8e)**
- f. Any games played by a team using ineligible players shall be forfeited regardless of the circumstances. **(GHA R&R 26.9)**

1. Any team may affiliate a maximum of 6 players under the following guidelines.

Clarifications:

- 1. To assure that players are affiliating to the highest level of development, the Rangers will complete affiliation lists by October 13<sup>th</sup>, the Rep teams will complete affiliation lists by October 20<sup>th</sup> and the
- 2. House teams will complete affiliation lists by October 27<sup>th</sup>. **Players must be on the DISTRICT REGISTRAR’S affiliation lists before playing in a game for the affiliation team.**
- 3. After January 15<sup>th</sup>, no other names may be added to any affiliation lists.
- 4. A player may affiliate with one team only during a playing season.
- 5. Once a player is on an affiliation list, coaches **MUST** contact the player’s coach before using him/her in a game.
- 6. Coaches must assure that players understand the affiliation to one team only.
- 7. Players may affiliate up and across. For instance, a Pee wee House A player may affiliated to a Major Pee wee Rep B team or a Bantam House A team (**need to be on an affiliation list, do not need to card**), may not affiliate to a Bantam House B team.
- 8. Minor players playing on teams that have Major players on the team become Majors. For instance, a 11 year old on a House A Pee wee team which has 12 year olds on it may not appear on a Minor Pee wee Rep B affiliate list.

If you require clarification, don’t assume, please check with the District Registrar.

#### Call-up Procedures for all Competitive Players and House League

- a. The coach or manager initiating the call-up shall first contact the requested player(s) coach or manager.
- b. Whenever possible, 48 hours notice should be given for any call-up requests. A minimum of 24 hours notice is required. (No telephone calls for call-ups after 10:00 p.m.)
- c. All call-ups require the approval of the players parent(s) and the player. The player does not report, if he has a meaningful game, as defined in the ODMHA Handbook, with his substantive team except with his coach’s permission.

- d. All coaches are to make every reasonable effort to distribute call-ups from among several players instead of calling up the same player.
- e. All call-up requests after January 10th of the existing season are to be made only on the authority of the Corporation First Vice President Competitive or House League, as pertinent.
- f. The coach or manager initiating the call-up shall, within 24 hours, inform the Corporation First Vice-President of all agreed call-ups. The Corporation First Vice-President shall record all call-ups and process all such call-up requests.
- g. Prior to game six (6) of a player call-up, a written agreement of all concerned parties must be in effect (head coaches of teams involved, Corporation President and the member association Presidents)

NOTE 1: Approval of Corporation First Vice-President is required before the fifth game after January 10th.

NOTE 2: In accordance with CHA rules and regulations, if a player is called up for more than five (5) meaningful games after January 10th with any higher affiliated team(s), he may not return to play at the lower division.

NOTE 3: Ideally a player should attend a practice before participating in a game at a higher level.

NOTE 4: Gloucester Ranger Call-ups - See Rules and Regulations Governing the Operations of the Gloucester Rangers Minor Hockey. (R&R 30).

#### **4. DIVISIONS AND CATEGORIES/LEVELS OF HOCKEY**

- a. House League teams will be formed in “A”, “B” and “C” levels taking into account member association total registrations in each division, the ability levels of the players and based on the following principles: **(GHA R&R 14.5)**
  - i) Teams to be formed to play at highest levels possible within the Corporation's House League, based on the team allocation chart to be approved by the GHA Board of Directors by September 1st of each year. An Association requesting an amendment to the approved allocation must submit a change request, in writing, to the V.P. House League prior to September 15th. **(GHA R&R 14.5a)**
  - ii) “C” level to be minimized to extent possible. **(GHA R&R 14.5b)**
  - iii) Competitive/Representative “B” teams to be formed in member associations where calibre exists and association players pooled with other associations if teams cannot be fielded. **(GHA R&R 14.5c)**
  - vi) The Corporation shall provide each member association with the number and level of teams to be submitted for House League by September 15<sup>th</sup>. **(GHA R&R 14.5d)**
  - v) When more than one team is fielded from an association in any division, they shall be balanced.

**(GHA R&R 14.5e)**

- vi) Players selected to a Rangers team cannot withdraw and return to Representative “B” hockey unless agreed by all parties. Should the parties be unable to agree the matter shall be escalated to the VP Competitive. **(GHA R&R 14.5f)**
- vii) The recommended team makeup for House League will be as follows: 9 forwards, 5 defence, 1 goalie. **(GHA R&R 14.5g)**
- viii) The Corporation shall have 7 and 8 year olds at the House League Novice level. **(GHA R&R 14.5j)**

**5. DIVISION TEAM COLOURS**

1. Member Association Team Colours

- a. The Board of Directors shall be responsible for regulating the team colours as designated below: **(GHA R&R 26.16a)**

b.

	<u>Primary Colour</u>	<u>Alternate Colour</u>
1. Gloucester Rangers	Black	White
2. Cumberland	Black	White
3. Blackburn	Red	White
4. Gloucester Centre	Black with red trim	White/Grey with red trim
5. Leitrim	Green	White
6. Metcalfe	Black	White
7. Orléans	Royal Blue	White
8. Russell	Maroon	White

- 2. For member associations which provide two sets of sweaters to each of their teams, no colour conflicts should arise given the colour designations listed above. Coaches must carry both sets of sweaters with them to all games. **(GHA R&R 26.16b)**

- 3. Where it is not possible for member associations to provide two sets of sweaters to each of their teams, the following rules shall be adhered to in order to minimize colour conflicts: **(GHA R&R 26.16c)**

- i) Where a member association issues sweaters to more than one team at the same level, these teams shall be registered by the colour of their sweaters; e.g. Gloucester Centre Cougars Black Novice “B”, Gloucester Centre Cougars Grey Novice “B”. In the unique case of large associations having multiple teams at the same level, it may not be necessary to register the individual teams by colour since all teams will have the same colour and this fact will be well known.
- ii) Where a member association issues sweaters to only one team at any level, these sweaters should normally be issued in the primary colour of that association, and the colour of the sweaters need therefore not be indicated when registering the team. If this is not possible, the association may issue sweaters in an alternate colour provided that the team is registered by this colour, e.g. Leitrim Hawks White Pee wee “A”.

- 4. Team coaches/managers are responsible to ensure that where team colours are similar and may

cause confusion in a game, the home team shall be responsible to arrange sweater colours to eliminate any conflict. **(GHA R&R 26.16d)**

## **6. TEAM OFFICIALS**

- a. Each team, Competitive/Representative and House League, shall have a coach, assistant coach, manager and trainer. The minimum of two (2) team officials must be present on the bench at all games. The coach and trainer shall be qualified in accordance with regulations of the Corporation, ODMHA or CHA. **(GHA R&R 15.1)**
- b. The duties and responsibilities of the team officials shall be in accordance with the member association, the Corporation, ODMHA and CHA Constitution, By-laws, Rules and Regulations and the Corporation Team Official Guide to Hockey Rules and Regulations. **(GHA R&R 15.3)**

## **7. COMPETITIVE PLAYERS**

- a. Any player who is carded and signed on ODMHL teams of the GRMH cannot play on a "B" Representative or House League team until such time as he is duly released by the GRMH in accordance with these regulations. **(GHA R&R 16.4)**
- b. Players who have signed an ODMHA/CHA card and play for an ODMHL team are governed by ODMHL rules. **(GHA R&R 16.2)**
- c. No CHA competitive team shall play a game or practice with a non-competitive team. **(GHA R&R 26.10)**

## **8. INSURANCE - BLUE CROSS COVERAGE**

Blue Cross coverage is most important when travelling to the USA. Your OHIP covers ONLY what expenses would be allowed in Canada, therefore you would be required to pay the additional monies owing. As medical expenses are usually higher in the USA, the additional cost could be rather expensive.

## **9. TRANSFER/RELEASE OF PLAYERS**

- a. As part of the GHA release process, the Ranger Chair must be consulted prior to an Area President signing any release for a AA player. The D9 Chair must also reconfirm with the Ranger Chair. **(GHA R&R 16.1)**

## **10. MOVEMENT OF PLAYERS**

- a. Initiation Program players are NOT ALLOWED to play Novice hockey. The Corporation shall have 7 and 8 year olds at the House League Novice level.

- b. As a general rule, a player may NOT be moved down to a less competitive classification until his team has played three (3) league games unless the GHA Vice President is satisfied, his talents are more suited to the lower league, initiation or development program. The best interests of the child and not coaches shall be paramount. Before exercising this authority, the Division Convenor shall consult with member association Convenors and parents to determine their views. Any player may (subsection to R&R16.8.b.) be subsequently moved back to the higher team. **(GAH R&R 16.8.a)**

Keeping Safety in mind, the following evaluation of over aged players will be undertaken

- skating ability
- ability to keep up with the play
- hockey sense
- stick handling skills
- shyness from the play
- evaluated at lowest level of the lower age category
- potential for injury

Exception: A player registered, for the first time, and identified by association evaluators as having talents more suited to a lower level, development or initiation program shall be identified and evaluated by GHA assigned evaluators prior to commencement of season play. Notification shall be provided to the GHA Vice President House League by September 20th.

- c. All member Associations registering in the GHA's House League must provide the GHA with Registration lists (including team affiliations). **(GAH R&R 16.8.b)**
- d. Team officials who wish to move or drop a player to a lower level from a team after four (4) league games have been played shall not drop the player until his case has been reviewed by the Board of Directors. Team officials shall notify their Director or Board representative and provide him with a complete explanation of the reason for the requested action. The representative shall notify the Board of Directors through the appropriate Division Convenor and the Board shall rule upon the request by the next Board meeting. **(GHA R&R 16.8.c)**

## **11. PLAYING RULES**

- a. In all divisions and categories/levels of hockey each player shall play a regular shift on his team during each game. The Convenor will not interfere with coaching strategy but he will not tolerate players sitting on the bench and not being given a chance to develop. Coaching strategy should not include speciality teams or double rotation of strong players that could upset regular rotations over a game and allow some players to play more than others. Any player on a roster whom the coach feels is not good enough to play a regular shift must be moved to a lower classification except as noted in R&R 16. **(GHA R&R 26.3)**
- b. When a Division Convenor has been informed that a team official has been reported as not giving fair and equal ice time, the Convenor will attend the next game and report his findings to the team official. A first warning will be given at which time the team official will be informed that a second offence, without justifiable cause, will result in the following.

Coaches not observing the Corporation's Conduct for Fair Ice Time, will be penalized as follows:

1. game misconduct and one week suspension

2. three meaningful games and 2 weeks suspension
  3. suspension until the Corporation's or Discipline Hearing is held. **(GHA R&R 26.4)**
- c. All players must wear the following protective head and neck equipment when on the ice during a game or practice. CHA insurance is not applicable if the safety equipment is not worn. **(GHA R&R 26.5)**
- i) CSA approved (and unaltered) helmets. No markings on the helmet, other than the manufacturer's, is permitted.
  - ii) CSA approved (and unaltered) full mask.
  - iii) A BNQ certified throat protector.
  - iv) Goalies, in addition to wearing the BNQ certified throat protector, will wear a commercially produced throat guard for goalies, which may be part of or attached to the helmet.
  - v) Chin straps must be properly secured at all times.
  - vi) An approved mouth guard

A penalty will be called, resulting in the player being ordered to the dressing room for the remainder of the game, when the player fails to comply with the above. **(GHA R&R 26.5)**

- d. Regular game sheets are to be used for all exhibition and tournament games. The copy normally left at the arena for the Division Convenor shall be forwarded to the Corporation office. **(GHA R&R 26.6)**
- e. Teams of the Corporation are NOT allowed to play against high school, college or university teams. **(GHA R&R 26.7)**
- f. Teams of the Corporation are NOT authorized to play any exhibition games using non-certified officials. **(GHA R&R 26.8)**
- g. House League Teams
- i) CHA playing rules, including 11 above shall apply to all GHA House League games except as hereinafter provided. **(GHA R&R 26.12a.)**
  - ii) Hockey played in the House League will be under Rule 50 of CHA, i.e. no deliberate body checking, and CHA Rule 18 "Starting Line-up" does not apply. The no deliberate body-checking rule applies to all House League games and tournaments being played in District 9. When a team is participating in a game, exhibition or tournament and there is body checking, the team officials shall obtain written approval from the parent/guardian for the player to participate in the game. **(GHA R&R 26.12.b)**
  - iii) All house league games shall be stop time periods. 1<sup>st</sup> period is 10 min., 2<sup>nd</sup> period is 10 min., 3<sup>rd</sup> period is 12 min. **(GHA R&R 26.12.c)**
  - iv) If a team causes a delay in the start of a game, the game clock will be started, the team will

be awarded a delay-of-game penalty. The referee will be responsible for the start of all games. **(GHA R&R 26.12.d)**

- v) Games scheduled to begin on the hour must end at the hour plus 50 minutes. Games scheduled to begin on the half hour must end at the half hour plus 50 minutes. If the game is called for reason of injury, late start etc a game will be considered a complete game if past the 25 minute mark of the fifty minute game (half the game). **(GHA R&R 26.12.e)**
- vi) The time clock located in the rink area will be used for game time, periods and penalties. If no time clock is available the referee, or his designate, shall be responsible for the game time. In the event of any dispute regarding time, the matter shall be referred to the referee in charge and his decision shall be final. **(GHA R&R 26.12.f)**
- vii) Each home team is required to supply for each game: game pucks; minor officials (one as the penalty and scorekeeper and one as the timekeeper); game sheets properly completed, signed and ready before game time. It is the home team's responsibility to have the game sheet completed and in the hands of the referee prior to the game. If it is not completed correctly and information is missing, the offending team will be penalized for delay of game. **(GHA R&R 26.12.g)**
- viii) Copies of game sheets are distributed as follows: the first copy to be submitted to the GHA Office within one (1) week; second copy to the head referee; third copy to the home team; and fourth copy to the visiting team. For tournaments and exhibition games see R&R 26.6. Failure to send the first copy to the GHA Office within the requisite time will result in disciplinary action up to a \$50 (fifty dollar) fine to the home team. **(GHA R&R 26.12.h)**
- ix) The following criteria will apply for breaking ties in House League standings:
  - 1) most wins in total;
  - 2) best goals for minus goals against;
  - 3) if teams are still tied, the team with the most wins between the tied teams; and
  - 4) if teams are still tied after iii), the team with the best goals for minus goals against between the tied teams. **(GHA R&R 26.12.i)**
- h. ODMHL Teams
  - i) ODMHL teams shall be governed by the appropriate ODMHL league. **(GHA R&R 26.2)**
  - i. As per CHA Regulation, a team official who is not registered on a CHA Registration Certificate card shall not be permitted behind the bench. The maximum number of team officials for carding is six (6) for any one team. Failure to comply will be treated as a gross misconduct.
  - j. Dressing Rooms
    - i) Any irregularities or damages should be reported immediately to the arena manager. It should be noted that the team can be held responsible for any damage(s). **(GHA R&R 26.17.a)**
    - ii) No team official, player or employee of any club may enter into any acrimonious discussion with any referee during or after a game. No person, except the President of the Branch or league or his representative, shall be allowed to enter the officials' dressing room on the day of the game. For any infraction of this rule, the matter shall be reported by the referee to the

President of the Branch for further action. (GHA R&R 26.17.b)

- iii) Dressing rooms are for the use of the team officials and the players ONLY, unless authorized by the team officials.(GHA R&R 26.17.c)

## **12. SCHEDULING OF GAMES**

- a. All games will be played when scheduled. Failure of a team to appear for a scheduled game without prior approval of the GHA shall automatically result in a forfeit of the game by the offending team and the award of two points to the non-offending team. In addition to this forfeiture, disciplinary action may be taken against the offending team.

NOTE: Should both teams agree to a replay of the game, the team who failed to appear will provide the ice for the game.

NOTE: If the required number of referees as per R&R 6.5 fail to appear, the HOME team shall use the ice for a practice. The HOME team will then provide one of its practice ice times for the rescheduled game.

- b. The home team shall be so indicated on all game schedules.
- c. Teams are responsible for their own game changes and must do so within their own level schedule.
- d. Team officials are to carry practice equipment to all games.

## **13. OFFICIATING OF GAMES**

- a. The following system of officiating is to be used (GHA R&R 6.5):
  - i) Competitive/Representative  
“AA”, “A” and “B” as detailed by the ODMHL.
  - ii) House League
    - Novice “A”, “B” and “C” ..... 2-man system
    - Atom “A”, “B” and “C” ..... 2-man system
    - Peewee “A”, “B” and “C” ..... 2-man system
    - Bantam/Midget/Juvenile ..... 3-man system
    - for playoff finals ..... 2 off-ice officials
  - iii) When the required number of officials are NOT in attendance for a game, the following rules shall apply:
    - 1. For a three-man system, the game shall be played if two officials are in attendance.
    - 2. For a two-man system, the game shall be played if one official is in attendance.
  - iv) If the requirements for 1 and 2 above are NOT met the game shall be cancelled and the HOME team shall use the ice for a practice. The HOME team will then provide one of its practice ice times for the rescheduled game.
  - v) The home team is to advise the Corporation office within 48 hours of game time when officials are NOT in attendance.

- b. All complaints regarding the refereeing of a game shall be submitted in writing to the Referee-in-Chief with a copy to the Corporation President. All written complaints will be answered to both the complainant and the Corporation President within fourteen (14) days of the date of the complaint. The Referee-in-Chief is responsible to provide the GHA with supervisions of referees as required at the request of the District Chair. Any supervision in excess of 2 per referee and per level must be approved by the District Chair. **(GHA R&R 6.6)**

#### **14. PLAYOFFS**

- a. The Board of Directors of the Corporation shall annually approve the playoff system taking into account the availability of ice, number of teams, costs of playoffs and other conditions. Such a playoff system shall be decided and all member associations informed prior January 1<sup>st</sup>. **(GHA R&R 27.1)**
- b. Teams must honour all play off commitments with the GHA or there will be consequences of a suspension of up to 1 year. Under no circumstances will teams be allowed to participate in tournaments during GHA House League playoffs. **(GHA R&R 27.3)**
- c. For play-offs only, teams may not use affiliated players unless the team is below 10 players (excluding a goalie).

#### **15. PENALTIES**

- a. All penalties shall be served in accordance with CHA Rules and Regulations and the ODMHA Code of Discipline. **(GHA R&R 26.13)**
- b. Penalties in division competition shall be as follows:
  - i) Minor - 2 minutes stop time.
  - ii) Double Minor - 4 minutes stop time.
  - iii) Major - 5 minutes stop time.
  - iv) Misconduct - 10 minutes stop time.

Timing of all penalties shall commence when the puck is dropped to recommence play. **(GHA R&R 26.14)**

#### **16. DISCIPLINE**

Discipline Committee **(GHA R&R 19.1)**

- a. The Committee shall consist of the District 9 Discipline Chair, a recording secretary (non-voting member), the Discipline Chair from each association or a representative and the Referee-in-Chief when requested for rules interpretation and referee procedures (non-voting member).

The Discipline Committee will administer discipline and conduct hearings in accordance with R&R 20.

- b. All penalties shall be served in accordance with the CHA Rules and Regulations and the ODMHA Code of Discipline which outline the minimum discipline for penalties (suspensions may be increased only with permission from the district discipline chair.). **(GHA R&R 20.1)**
- c. A team playing in an out of Branch tournament shall abide by the out of Branch Code of Discipline for the duration of the tournament only. Upon return to the Branch, a team must abide by the Branch Code of Discipline. **(GHA R&R 20.2)**

## **17. SUSPENSIONS**

- a. District 9 Executive members are authorized to suspend players, team officials and others who commit infractions or, through their behaviour, endanger the welfare of others or make a travesty of a game. **(GHA R&R 20.3.a)**
- b. Time suspensions are measured from midnight of the offence although the offender is suspended immediately from the game. **(GHA R&R 20.3.b)**
- c. Game and time suspensions are fully served only after both the number of meaningful games and the elapsed time have both expired. **(GHA R&R 20.3.c)**
- d. A player under time suspension is removed from all contact with organized hockey including practices and exhibition games as well as refereeing and acting as a minor official. **(GHA R&R 20.3.d)**
- e. A player under game suspension may only practice with the team. **(GHA R&R 20.3.e)**
- f. A coach, manager or any other team official under suspension shall not travel with any team, enter their dressing room nor carry out any duties of office during the term of the suspension. **(GHA R&R 20.3.f)**
- g. Meaningful games: Only league, playoff, playdown and recognized tournament games shall count as suspended games. Exhibition games are not meaningful games. Exceptions such as “friendship tournaments” may be approved by the Corporation President upon written request. **(GHA R&R 20.3.g)**
- h. Any suspension that is not fully served before the end of the season will be carried forward to the following season. **(GHA R&R 20.3.h)**
- i. Referee-in Chief
  - 1. Ensure that referees submit, within 48 hours, clear and fully completed game sheets and game incident reports for penalties resulting in misconducts, game and gross misconducts, and match penalties.
  - 2. Inform Assignor and Corporate President of the suspension of officials. **(GHA R&R 20.3.i)**

j. Team Official (**GHA R&R 20.3.j**)

The coach and/or any team official must:

1. Report every misconduct and penalty resulting in suspendible offence, including those received in outside tournaments, to the Association Convenor and to the District 9 office (District Discipline Chair) within 72 hours. (change from 24 hours).
2. Report every situation where a coach or team official suspends a player for disciplinary reasons to the Association Convenor and to the District 9 discipline Chair within 72 hours. It should be noted, that at no time can a coach or team official suspend a player for more than one game.
3. Send or fax a copy of the game sheet to the District 9 office. It must be received within 48 hours.  
NOTE: Failure to report and send in the game sheet will result in a one-game suspension.
4. Check the ODMHA Handbook and Directory for the time and/or game suspension(s) that are applicable to the penalty.
5. Confirm with the member association Convenor or Discipline Chair the time and/or game(s) to be served.
6. Ensure that the player(s) and his (their) parents/guardians understand the rules and conditions of the suspensions (see ODMHA Handbook and Directory).
7. Ensure the player(s) and/or official(s) serve the suspensions and that the official game sheet is completed properly, e.g., John Doe (suspension 1 of 2).  
NOTE: Ultimately, it is the team official's responsibility to know the rules and to ensure that penalties incurring suspensions are reported and served correctly.
8. A coach who plays a player under suspension or has a suspended official carry out duties will be suspended pending a discipline decision by the District Discipline Chair.

i. District Association Convenor (**GHA R&R 20.3.k**)

- i) Ensure the rules and regulations are followed by players and team officials.
- ii) Report to the District Discipline Chair all incidents that may result in a disciplinary action towards any parent prior to any hearing taking place. All incidents of physical assault will be forwarded to the ODMHA for further action by way of the District Discipline Chair.
- iii) Verify the time/game suspensions with the District Discipline Chair and confirm with the coach.
- iv) Provide advice to the District and member association Discipline Chair and the Discipline Committee and recommend disciplinary action when warranted.
- v) Follow up with the coach to ensure that suspensions are fully served.

## **18. DISCIPLINARY HEARINGS**

- a. Based upon a review of game sheets, game incident reports, letters of complaint and consultation with the member association and relevant Convenor, the District Discipline Chair shall convene disciplinary hearings. Disciplinary hearings may also be convened at the request of the Corporation President. (**GHA R&R 20.5.a**)

- b. Hearings are typically conducted for players and team officials following: **(GHA R&R 20.5.b)**
  - i) Serious game offences.
  - ii) Game offences that result in serious injury.
  - iii) Second or multiple major penalties.
  - iv) Behaviour that endangers the welfare of others or makes a travesty of a game.
- c. Discipline Committee Decisions **(GHA R&R 20.5.c)**
  - i) The Committee members hear the circumstances of the incident and determine whether the penalty issued by on-ice officials was justified or warrants further disciplinary action.
  - ii) In essence, the Committee decides that the penalty and disciplinary action stand as is, or are increased, or finds the penalty unjustified.
  - iii) If the penalty is found unjustified, the Committee shall recommend appropriate action to the Corporation President for decision.

## **19. APPEALS (GHA R&R 20.6)**

### **Appeals Committee (GHA R&R 19.2)**

- a. The Committee shall consist of the Corporation President (Chair), a recording secretary (non-voting member), a minimum of three Corporation Board members or their designate and the Referee-in-Chief for rules interpretation and referee procedures when requested (non-voting member).
- b.* The Appeals Committee conducts hearings resulting from a game protest or an appeal of decisions resulting from a disciplinary hearing.
- c. The Corporation President is responsible to review and assess all appeals and to convene appeal hearings. Appeals must be based on reasonable grounds and on information that officials acted improperly or mistakenly. **(GHA R&R 20.6 a)**
- d. There are two types of appeals: . **(GHA R&R 20.6 b)**
  - i) Game protest.
  - ii) Code of Discipline appeals (appeals of penalties and disciplinary hearing decisions).
- e. What Constitutes an Appeal of a Discipline Hearing . **(GHA R&R 20.6 c)**
  - i) New evidence not used in the original hearing which may have an effect on the decision.
  - ii) Irregularities in the proceedings of the original hearing that may have caused an unjust hearing.

- iii) Grounds that the decision of the original hearing was too harsh or too lenient or reached in an unjust manner.
- f. Appeal Procedures . (GHA R&R 20.6 d)
- i) Appeals must be received in the District 9 office within 48 hours of the game or notification of discipline hearing results. Copies must be sent to the Division Convenor.
  - ii) Appeals must be in writing accompanied by a cheque payable to the Gloucester Hockey Association for \$150. Each voting delegate and Referee in Chief in attendance will be reimbursed \$10 for expenses for each appeal attended.
- NOTE: Appeals for multiple penalties require \$150 for each penalty appealed. For example, a player receives an instigator, a fighting and a gross misconduct in a game. An appeal would be \$450 for all three penalties, \$300 for two penalties and \$150 for one penalty. The appeal must clearly identify which penalty is being appealed and paid for.
- iii) 50% of Cheques for upheld appeals will be returned

## **20. GUIDELINES FOR DISCIPLINE AND APPEAL HEARINGS (GHA R&R 20.7)**

- a. Scheduling
  - i) Disciplinary hearings will be scheduled by the District Discipline Chair as soon as possible following a serious incident (GHA R&R 20.5.b.). Appeal hearings will be scheduled by the Corporation President as soon as possible following the receipt of a legitimate appeal.
- b. Attendance
  - i) Attendance is at the discretion and permission of the Chair of the hearing.
  - ii) Non-attendance by offenders/appellants may result in disciplinary action and forfeiture of fee.
  - iii) In attendance are:
    - 1) appellant(s) or offender(s);
    - 2) team officials where involved
    - 3) on-ice officials;
    - 4) game officials where involved;
    - 5) witnesses;
    - 6) member association representative or Corporation officials, e.g., Convenors where involved.
    - 7) parent or guardian where a minor is involved.
- c. Hearing Procedures
  - i) Invariably, there are two sides to every issue. Each side will be permitted to have someone present who can offer evidence or support.
  - ii) All comments, questions and responses will be addressed through the Chair.

- iii) Each person scheduled to appear will be allowed to state his case without interruption.
- iv) No hearsay evidence will be allowed. Written and signed statements by persons who are not able to attend may be accepted at the discretion of the Chair.
- v) If a prepared statement is read, the original copy is to be submitted to the Chair after being presented.
- vi) A short rebuttal is allowed each person after all the witnesses have made their initial statements.
- vii) Only Committee members may ask clarifying or supplementary questions at the conclusion of a person's statement.
- viii) At the conclusion of all statements and questions, all those who are not members of the hearing Committee shall be excused and the Committee members will deliberate and make their decisions.
- ix) Any member with a conflict of interest will not vote, e.g., the Committee member of the association involved.
- x) All affected parties will be verbally notified (followed in writing) of the Committee's decision via the respective Convenor or association representative (usually the next day, unless approval of the District Discipline Chair is required).

## **21. ON-ICE OR OFF-ICE ACTIVITY COMPLAINTS (GHA R&R 20.8)**

- a. Complaints are an important way to improve the conduct of District 9 hockey. If it is important, complaints are to be submitted in writing because only written complaints will be acted upon.
- b. Complaints concerning an individual, team, team official, parent or fan that engages in activity on or off the ice which threatens the welfare of others or makes a travesty of the game should be directed through member association Presidents or Convenors to the District Discipline Chair.
- c. The District Chairman will refer complaints to the Discipline Chair, member association President, Convenor, or Executive member, as appropriate, to take action.
- d. The complainant will be advised of who is responsible for handling and responding to the complaint and of the results as soon as possible.

## **22. TOURNAMENTS**

- a. Teams entering tournaments will follow the Code of Discipline of the respective tournament for the duration of the tournament only. Games that players or team officials have still outstanding as per the ODMHA Code of Discipline must be served immediately upon return to regulation or playoff

games. Any misconduct, game misconduct, gross misconduct, fighting major or match penalty called against a player, coach, manager or team official must be reported by the coach to the Division Convenor. In addition the coach shall request from the Tournament Committee that a copy of the official game sheet and referee's report be forwarded to him or that the report be transcribed onto the coach's copy of the game sheet. In either case the coach shall forward the game sheet and report to the Division Convenor who shall proceed in accordance with R&R 20.3k. **(GHA R&R 24.1)**

- b. As a general policy, each House League team should restrict itself to a maximum of three (3) tournaments in any season. **(GHA R&R 24.2)**

### **23. TRAVEL PERMITS**

- a. For interbranch travel, a Travel Permit is required as per ODMHA Regulations, i.e., "No team may travel outside the area of the ODMHA jurisdiction without first having obtained the written approval of the ODMHA, through the use of the approved Travel Permit." The Travel Permit must be signed by the member association President and the Corporation President. **(GHA R&R 25.1)**
- b. After playing in game(s) where the travel permit was required the team must return all game sheets to the GHA Office before any additional travel permits will be issued. These game sheets will be used to track how many games are played outside the district and they will also be used to track suspensions **(GHA R&R 25.2)**

### **24. MINOR GAME OFFICIALS ROLE**

- a. Official Scorer
  - i) Obtain the game sheet indicating the line-up of each team, name and sweater number, the captain and alternatives clearly indicated. The game sheet must be signed by the team officials.
  - ii) Advise the referee when the same player has received his second major penalty during the same game.
  - iii) At the completion of the game, have the official game report signed by the referee and give copies to the coaches.
  - iv) Enter on the game report the goals scored, by whom, and to whom assists, if any, are to be credited.
  - v) Record all penalties assessed, stating the names and numbers of penalized players, the duration of each penalty, the infraction and the time the penalty was assessed.
- b. Timekeeper
  - i) Keep the penalty bench free of spectators.
  - ii) Open door when time penalty expires.
  - iii) Be able to recognize the hand signals of the referee.

- iv) Record the time served by each penalized player during the game and, upon request, inform the penalized player as to the unfinished time of his penalty.
- v) If a player leaves the penalty bench before his time has expired, the penalty timekeeper shall note the time and notify the referee, who will stop play as soon as possible.
- vi) Record the time of the start and finish of each game and all actual playing time during the game.
- vii) In any dispute regarding time, the matter shall be referred to the referee and his decision is final.
- viii) Be familiar with the type of clock.
- ix) Should understand the coincidental major penalty rule and examples in the CHA Rule Book.
- x) Should understand delayed penalty situations and the order in which penalized players return to the ice.
- xi) Stop the clock only on referee's whistle and automatically at the end of the period.

## **25. VIDEOS**

There are a large variety of videos available for rent \$5/day, \$10/weekend and \$25/week. Videos are available at the ODHA office.

## **26. SOME DOS AND DON'TS**

- a. During the game DON'T yell instructions at the players. DO tell the players in a normal tone of voice when they come off the ice what they did right or wrong so that they will know what to do the next time out.
- b. DON'T try to run the bench by yourself. Have an assistant to see that the next lines are ready to go, allowing you to concentrate on the play and to observe players' actions.
- c. DON'T criticize referees. They will make mistakes, but your vocal criticism will only bring bench penalties which will hurt the team and suggest to your players that such conduct is okay or smart - it is neither!
- d. DON'T try to teach basic skills on the bench. Concentrate on play-oriented activities. It's too late to teach basic skills once the game starts.
- e. Be positive and DO give encouragement to the team as well as compliments. Players like to know someone wants them to do well, and is proud of them when they do.
- f. GIVE ALL PLAYERS A REGULAR SHIFT ON THE TEAM, TO DO OTHERWISE IS

CONTRARY TO THE RULES AND REGULATIONS. They come to play - they all paid the same registration fee.

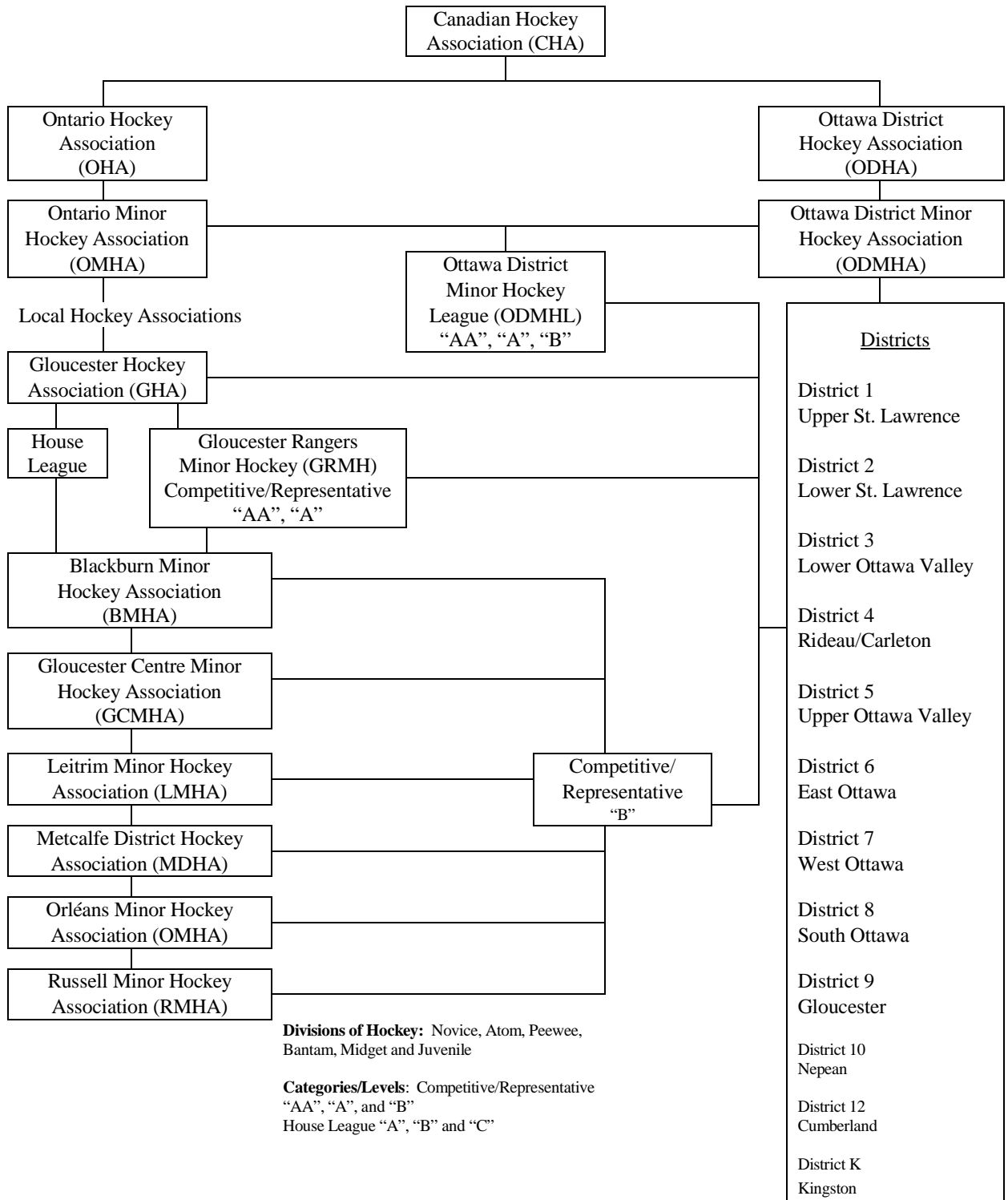
**27. HOCKEY SEASON (GHA R&R 26.18)**

- a. The hockey season for a player, a team official and/or team shall be from the date of registration to the date the team completes the last playoff game in the team division hockey schedule, i.e. the team is then legally disbanded.
- b. As the benefits of the CHA Insurance Plan cover members against accidental injury or death ONLY while participating in CHA sanctioned hockey activities, authorization must be obtained from the member association and the Corporation, by the disbanded team, in order to participate in any additional hockey activities and/or tournaments following the last playoff date. The team becomes legally disbanded on completion of the authorized activity and/or returns from the tournament.

**MANY THANKS FOR YOUR CONTRIBUTION**

**HAVE A FUN SEASON!**

STRUCTURE OF HOCKEY



**APPENDIX “A”**

**OTTAWA DISTRICT MINOR HOCKEY ASSOCIATION (ODMHA)**

<b><u>District 1</u></b> Upper St. Lawrence
Athens Brockville Cardinal/Iroquois Chesterville Edwardsburg Kemptville Morrisburg North Leeds Prescott Smiths Falls Winchester

<b><u>District 2</u></b> Lower St. Lawrence
Akwasasne Alexandria Char Lan Cornwall North Glen Stor South Stormont

<b><u>District 3</u></b> Lower Ottawa Valley
Casselman Clarence Creek Embrun Hawkesbury Rockland St. Isidore Vankleek Hill

<b><u>District 4</u></b> Rideau/Carleton
Almonte/Pakenham Carleton Place Kanata Lanark Osgoode/Rideau Ottawa Titans Pakenham Perth Richmond Stittsville West Carleton

<b><u>District 5</u></b> Upper Ottawa Valley
Arnrior Barry’s Bay Deep River Eganville Muskrat Pembroke Petawawa Renfrew

<b><u>District 6</u></b> East Ottawa
East Ottawa Voyageurs Ottawa Centre Sandy Hill St. Laurent Vanier Viscount/Alexander

<b><u>District 7</u></b> West Ottawa
Belair Britannia/Westboro Laroche Park Ottawa West

<b><u>District 8</u></b> South Ottawa
Alta Vista Canterbury Elizabeth Park Riverside South Ottawa

<b><u>District 9</u></b> Gloucester
Blackburn Gloucester Centre Leitrim Orléans Metcalf Russell Gloucester Rangers

<b><u>District 10</u></b> Nepean
Nepean Raiders

<b><u>District 12</u></b> Cumberland
Cumberland

<b><u>District K</u></b> Kingston
Greater Kingston Kingston Kingston Township Gananoque Ernestown Township Napanee Church Athletic League

**SERIOUS INJURY/INCIDENT REPORT PROCEDURE**

Very often, the opportunity to prepare a logical valid defence for alleged negligence rests on the information obtained immediately following such incident, by statements obtained from witnesses.

As we all know, the accuracy of recall by witnesses is often considerably diminished by time. Therefore, it is incumbent upon us to obtain as much factual information as it is possible to secure in as short a period of time as possible.

The CHA has prepared a form referred to as a Serious Injury Report which, when completed as accurately as possible, will enable the National Office to make a determination as to whether or not this is the type of incident which we feel should be immediately investigated by our professional adjusting firm.

To assist in this regard, the Branch could assign the responsibility to various individuals within the Branch, e.g. District Director, Regional Director, etc., who upon being advised of a serious injury or incident, would endeavour to have this form completed to the best of their ability and initiate a preliminary investigation which would include the completion of this report. The report should then be forwarded as soon as possible to the Branch Office who, in turn, would contact the National Office with the content of the report.

During the initial investigation, the individual assigned the responsibility for doing the initial investigation should be made aware that if it is a serious injury which has occurred, that they in no way discuss the matter with the injured party or his parents/guardian. It is imperative that everyone be aware that time is of the essence in ensuring the reporting of any serious injury or incident of which they are aware.

**C.H.A. Serious Injury Report**

This report MUST be completed when:

1. a player is taken by ambulance to a hospital;
2. if the injury will not allow the player to return to active duty based on a physician's diagnosis; or
3. if a possible claim/suit could result from the injury against the C.H.A.

**OTHER SOURCE MATERIALS:**

1. Your area registrar has copies of all forms required for reporting injuries as well as the CHA Insurance Policy.

2. Each area has a copy of the ODMHA Handbook which you should have received with this document. Please make sure you know, and are following, the ODMHA “Code of Discipline”.

APPENDIX "C"

GHA TEAM ALLOCATION CHART

Novice/Atom/Peewee

	A	B	C	A	B	C	NOTE
				%	%	%	
< = 2	1	1	0	50.00%	50.00%	0.00%	1
3	1	1	1	33.33%	33.33%	33.33%	
4	1	2	1	25.00%	50.00%	25.00%	
5	1	3	1	20.00%	60.00%	20.00%	
6	2	3	1	33.33%	50.00%	16.67%	
7	2	3	2	28.57%	42.86%	28.57%	
8	2	4	2	25.00%	50.00%	25.00%	
9	2	5	2	22.22%	55.56%	22.22%	
10	3	5	2	30.00%	50.00%	20.00%	
11	3	5	3	27.27%	45.45%	27.27%	
12	3	6	3	25.00%	50.00%	25.00%	
13	4	6	3	30.77%	46.15%	23.08%	
14	4	6	4	28.57%	42.86%	28.57%	
15	4	7	4	26.67%	46.67%	26.67%	
16	4	8	4	25.00%	50.00%	25.00%	
17	5	8	4	29.41%	47.06%	23.53%	
18	5	8	5	27.78%	44.44%	27.78%	

**NOTE**

- 1 Associations with only two teams may at a minimum form two "B" teams. They cannot form a "C" team unless they form an "A" team.

Bantam/Midget

	A	B		A	B	NOTE
				%	%	
< = 2	1	1		50.00%	50.00%	2
3	1	2		33.33%	66.67%	
4	2	2		50.00%	50.00%	
4	1	3		25.00%	75.00%	3
5	2	3		40.00%	60.00%	
6	2	4		33.33%	66.67%	
7	3	4		42.86%	57.14%	
7	2	5		28.57%	71.43%	3
8	3	5		37.50%	62.50%	
9	4	5		44.44%	55.56%	
9	3	6		33.33%	66.67%	3
10	4	6		40.00%	60.00%	
11	4	7		36.36%	63.64%	
12	5	7		41.67%	58.33%	
13	5	8		38.46%	61.54%	
14	6	8		42.86%	57.14%	
14	5	9		35.71%	64.29%	3

15	6	9		40.00%	60.00%
16	7	9		43.75%	56.25%
16	6	10		37.50%	62.50%
17	7	10		41.18%	58.82%
18	8	10		44.44%	55.56%

3

**NOTE**

- 2 Associations with only two teams may request to form two "B" teams if approved by the GHA Board.
- 3 Associations will be allowed to choose between +1/-1 team vs current allocation.